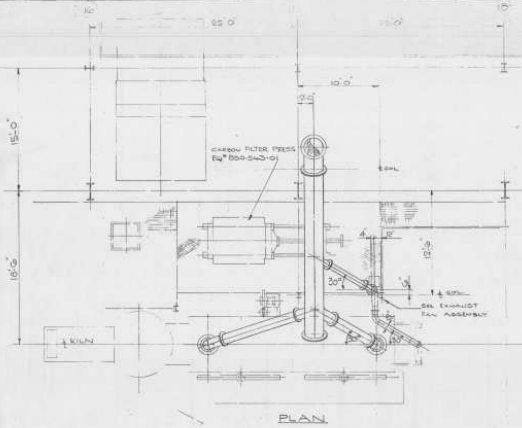
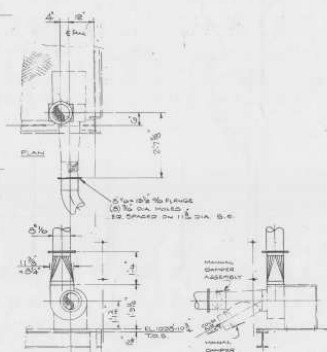


NOTES

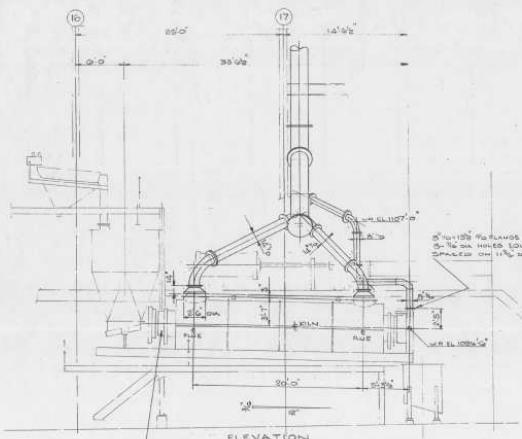
1. SUPPLY OF PROCESS VENTILATION DUCTING AND EQUIPMENT SHALL BE IN ACCORDANCE WITH W.E.L. SPECIFICATIONS S-800-S00-S (SUPPLY OF SYSTEM SUPPORTS BY GENERAL MECHANICAL CONTRACTOR).
2. SUPPORT AND INSTALLATION OF PROCESS VENTILATION SYSTEMS SHALL BE IN ACCORDANCE WITH W.E.L. GENERAL MECHANICAL INSTALLATION SPECIFICATION.
3. INSULATION WHERE REQUIRED BY OTHERS.



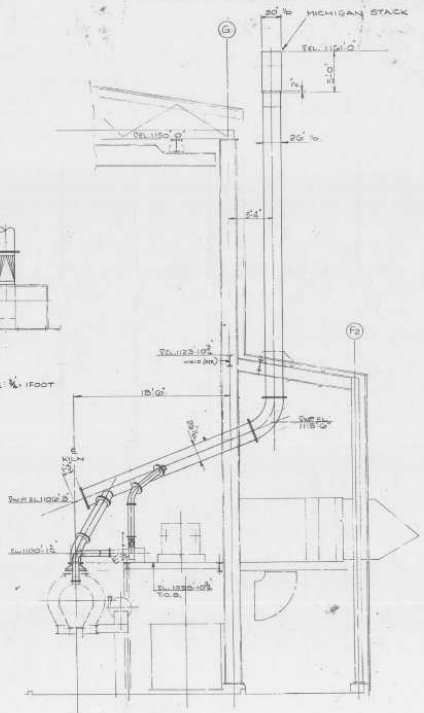
PLAN



EXHAUST FAN ASSEMBLY SCALE 1/4" = 1' FOOT
[FAN SUPPLIED WITH KILN]



CARBON REACTIVATION KILN
EQ. NO. 850-553-01



REFERENCE	NO.	DETAIL	REFERENCE	NO.	DETAIL	REFERENCE	NO.	DETAIL	NO.	DATE	BY	CHKD.	APPROV.	ISSUED FOR	DATE	REV.	DESCRIPTION OF REVISION
See Drawing Title & Comments																	
See Drawing Title																	
See Drawing Title																	
See Drawing Title																	

NEPTUNE COLCAMP PROJECT
RESOURCES CORP.

**GOLD RECOVERY AREA
KILN VENTILATION
PLAN AND ELEVATIONS**

WRIGHT ENGINEERS LIMITED
TORONTO CANADA
P.O. Box 100 880 8401 0

Scale: 1/4" = 1' FOOT

3061-850-8401-A